

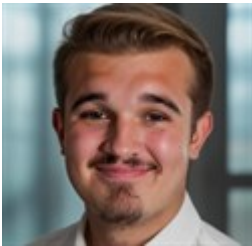


\$ 515,000



4416 N 22nd Dr, Phoenix, AZ 85015

- » Beds: 4 | Baths: 3 Full
- » MLS #: 7015602
- » Single Family | 2,191 ft² | Lot: 7,180 ft²
- » More Info: 4416N22ndDr.IsForSale.com



Noah Knisley
 (602) 341-3319
noah@arizonarealty.org
<https://arizonarealty.org/>

Epoque Realty
 2701 E Camelback Rd, Ste 150
 Phoenix, AZ 85016
 (602) 341-3319



Remarks

Fully reimagined and ready for its next chapter, this 4 bedroom, 3 bathroom Phoenix home centers around a striking open concept design anchored by a standout kitchen. Quartz counters extend across an oversized island with seating, paired with sleek cabinetry and stainless appliances that create a clean, modern feel. Wide plank flooring and recessed lighting flow throughout, bringing warmth and continuity to each space. Bathrooms are thoughtfully updated with refined finishes. Major improvements include updated electrical, updated plumbing, a newer roof, and new hot water heater. A private attached casita with its own entrance and bath adds flexibility. Set on a large lot with low maintenance landscaping and ample parking, minutes to Grand Canyon University, dining, and parks.

